



ARIS 9

Highlights of next ARIS major release

July 2012

CONTENTS

INTRODUCTION	3
ARIS RELEASE ROADMAP: WHAT YOU CAN EXPECT	4
ARIS CLOUD STRATEGY	5
ARIS BUSINESS STRATEGY HIGHLIGHTS	5
BUSINESS PROCESS ANALYSIS (BPA) AND ENTERPRISE ARCHITECTURE (EA) HIGHLIGHTS	6
EASE OF USE & NEW UI	6
BPA/EA INTELLIGENCE	7
FLEXIBLE META MODEL	7
SPREADSHEET	7
BPMN 2.0 SIMULATION	8
CENTRAL ADMINISTRATION AND USER MANAGEMENT COMPONENT (UMC)	8
ARIS PROCESS GOVERNANCE	9
EA DASHBOARDS	10
OPEN BPM WITH ARIS	10
MODEL-TO-EXECUTE (M2E)	11
ARIS FOR SAP HIGHLIGHTS	12
GOVERNANCE, RISK & COMPLIANCE (GRC) HIGHLIGHTS	13
REAL-TIME GRC/REAL ² GRC	13
ENHANCED AND IMPROVED ANALYSIS	13
PROCESS INTELLIGENCE (PI) HIGHLIGHTS	14
UNIFIED PI	14
BUSINESS AND DATA ANALYTICS	14
ARIS MASHZONE INTEGRATION AND “ANALYTICS ANYWHERE”	14
YOUR NEXT STEPS	15

1 INTRODUCTION

All companies are built basically using the same architecture—no matter if they are big or small, in Europe, Asia or the Americas. All have a business model, processes and IT applications. The business model describes what products and services are produced for which markets, who the customers and business partners are and the company's plan for the future.

Processes are built for each company based on its business model. All processes, no matter the industry or business, exist to support the business model. The backbone of processes is IT. Information technology assures business processes have the applications and data they need to be up and running.

In most companies, change happens. The business model changes often. New products are launched. Acquisitions take place and must be integrated. New markets are conquered. Customer power grows stronger and customer demands continuously change. This, of course, directly impacts a company's processes.

Keeping up is a never-ending job! Existing processes must be modified and new processes established. Processes from an acquired organization must be aligned and integrated. Also, the IT landscape has to be adjusted. That means existing apps must be changed, new apps introduced and acquired applications integrated.

Problem is, this adaptation isn't very fluid in most organizations. That's because the business model, the processes layer and IT applications are not well connected. If the strategy changes, it's hard to see which processes are affected and how to change them. If a process needs to change, it's hard to figure out which IT systems are affected and how they must be changed to support the new process. Once a process is up and running as an application, it's almost impossible for most of the organization to prove that processes support the new strategy. With such a disconnect between strategy, process and applications, it is hard to adapt to changing business models and new market conditions.

To stay agile and competitive, every business should be concerned about how fast it can adjust to business model changes and how fast its processes and its supporting application landscape can adapt. To meet this need, Software AG provides a layer between business and IT—a process layer or "agility layer." This agility layer is the key to keeping your business adaptive because the layer directly interconnects strategy, processes and IT. It's there to help your business continuously adapt to new market conditions.

Along with changing business environments and business models, your business must also keep up with new technologies that change how you work every day. There are important market trends and new technological trends, such as social networking, mobile applications, and cloud computing, that make huge impacts on companies, business processes and IT departments. That won't change.

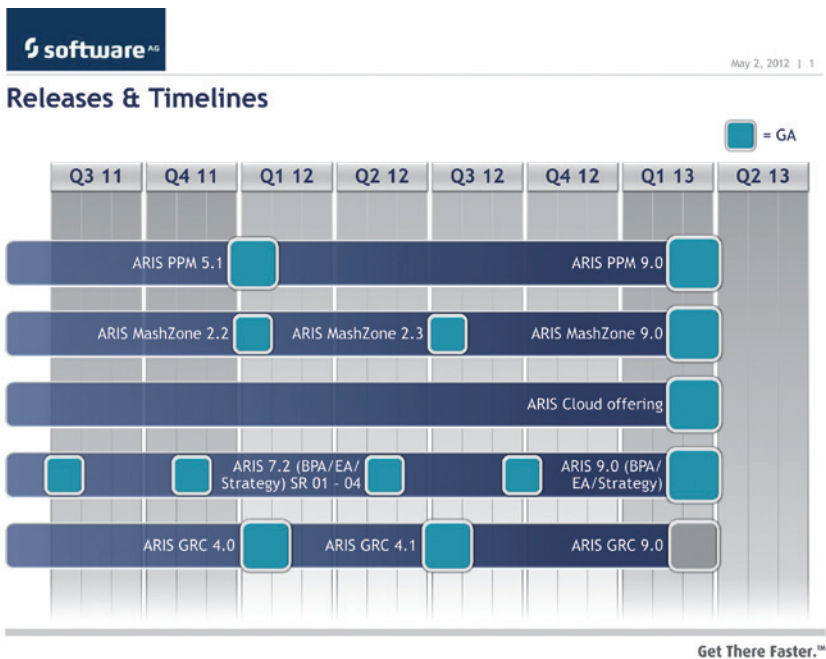
2 ARIS RELEASE ROADMAP: WHAT YOU CAN EXPECT

You can expect the latest release of ARIS to:

- Be a major part of the Software AG agility layer to ensure business users and business analysts can easily describe, analyze, change and adopt their business processes to correspond with changing business models and strategies
- Offer new features as requested by our customers
- Incorporate new technologies, such as social networking, mobile capabilities and new usability concepts, so more stakeholders can take advantage of the power of Business Process Management (BPM)
- Continue to prove the market leadership of ARIS

ARIS 9 will reflect Software AG's aim to help our customers achieve Business Process Excellence. This means all ARIS components, including ARIS Business Architect, ARIS MashZone, ARIS Process Performance Manager (PPM) and ARIS Business Publisher, will be released with new ARIS 9 functionality. webMethods products similarly will be released with new webMethods 9 functionality. This version number harmonization will make it easier for you to understand which ARIS and webMethods products are released together and designed to work together.

All new ARIS products, enhancements or feature enrichments will be aligned to deliver an agility layer for BPM and to help our ARIS customers to reach their business goals faster by achieving Business Process Excellence.



Read on for more detailed descriptions of planned and upcoming ARIS 9 products and features.

3 ARIS CLOUD STRATEGY

Software AG will release a new ARIS product that runs in a cloud infrastructure. It will extend the features of existing ARIS products and enable all roles and employees within an organization to be an integrated part of a BPM program.

ARIS in the cloud will bring the contents of the ARIS repository into your browser. You'll be able to visualize processes. Process modeling, capturing and annotation, discussions and other forms of collaboration as well as dashboarding will also be enhanced.

ARIS 9 will provide a lightweight entry into BPM—ideal for those not specialized in or experienced with BPM. A collaborative social network infrastructure will be the basis for all stakeholders and participants. As a result, you'll be able to liberalize process knowledge within your organization and employees can have open discussions about your company's processes. A professional process governance will be an integrated part of ARIS 9.

The complexity of process models will be reduced dramatically to increase acceptance. You'll be able to transform process models "on the fly" into appealing easy-to-understand and easy-to-read Web pages. In ARIS 9, you'll find the right tools to encourage employees to discuss a process description using state-of-the-art collaborative features.

ARIS will fully integrate process life-cycle governance, enabling domain experts to propose changes to the process description in a formal but user-friendly manner. This will make comparison, cleansing and sign-off activities much easier.

By reducing the entry barrier and learning curve, ARIS 9 will enable more people to take advantage of BPM. Because more people will help with building the process repository, they'll be more motivated to add their knowledge to it.

You'll also be able to use the new cloud-based ARIS product in a private cloud scenario with existing ARIS products and integrated into the existing ARIS repository. Software AG also plans to offer a public cloud-based version of ARIS on a Software-as-a-Service (SaaS) model.

4 ARIS BUSINESS STRATEGY HIGHLIGHTS

The next major release of ARIS Business Strategy will focus on extending strategy methods and offering User Interface (UI) enhancements. Different perspectives will increase the usability of ARIS Business Strategy for strategists during design and implementation of a business or IT strategy. The planned extension of the strategy methodology will ensure that ARIS Business Strategy supports the ASAP value management methodology. This will increase the coverage of ARIS Business Strategy and allow SAP customers to use ARIS Business Strategy as an accelerator to drive their ASAP value management projects.

5 BUSINESS PROCESS ANALYSIS (BPA) AND ENTERPRISE ARCHITECTURE (EA) HIGHLIGHTS

5.1 EASE OF USE & NEW UI

Extending the enhancements of ARIS 7.2, ARIS 9 will make ARIS Platform products, including ARIS Business Architect and Designer, ARIS IT Architect and Designer, ARIS for SAP, ARIS Strategy, ARIS for Six Sigma and ARIS Process Automation Architect, easier to use across all Enterprise BPM solution areas.

To improve ease of use, several new features are planned:

- An improved UI will provide a modern look-and-feel with toolbars and toolbar tabs that cluster specific functionalities like you'll find in Microsoft® Office® tools and Web browsers.
- Role-based user interfaces will be configurable and will allow each individual to select a perspective for viewing so that ARIS fits the needs of each individual user.
- Improvements in the setting up of modeling conventions and the continuous handling and maintenance are planned via improved functionality for filter creation. This will build on already-existing conventions and sorting functionalities.

The new UI will be an all-purpose feature that applies to all ARIS users for modeling, analysis, process and IT engineering, configuration, administration and controlled review.

Apart from a fresh-and-modern look navigation, the tool will be faster to use with shorter paths between functionalities, more tooltips and intuitive handling due to already familiar concepts from other state-of-the-art software applications. Consequently, training will be easier.

Also, a pre-configured set of user perspectives will provide you with different sets of functionality depending on the task at hand. For example, a person assigned to review only will have a very limited set of buttons available whereas a person interested in analysis and process/business engineering will have more specific analysis and reporting capabilities.

Easier creation and updating of ARIS filter configurations will be possible with better overview of changes. You'll spend less time spent on administration and gain more time for other tasks since there will be less manual work.

As a result of this new role-based UI, you'll need to install only one single ARIS client. The specific functionalities for each user can be enabled via license key and individual settings (perspectives).

5.2 BPA/EA INTELLIGENCE

BPA/EA intelligence will provide a completely new way and user experience to not only browse, analyze and evaluate the ARIS repository but also to create results in various formats. It will enable all kind of ARIS users to access the data of the ARIS repository in a flexible and easy way so they can conduct comprehensive analytics based on this data. The functionality includes a three step approach: Query – Template – Result.

You'll be able to define queries with the help of a graphical query builder and later managed. These queries will access the ARIS repository and provide data to templates that define how the data will be visualized—for example in Microsoft® Excel® spreadsheets, Microsoft® Word® documents or ARIS MashZone dashboards. Additionally, you'll be able to browse the actual content of the database in real-time independent of any ARIS model definition. Customized viewpoints can be designed, saved and updated based on browsing results.

With this comprehensive functionality, you'll have a powerful tool to analyze, browse and evaluate the ARIS repository to increase the value of your BPA and EA initiatives.

5.3 FLEXIBLE META MODEL

A flexible meta model is a core requirement of the ARIS Platform. It includes capabilities to configure and enhance the ARIS meta model with new artifacts, connections and models. With the help of appropriate wizards, ARIS stakeholders will be able to define and manage their own company specific meta model or expand existing frameworks, such as TOGAF, with custom-specific enhancements. With the help of the flexible meta model approach, you won't have to wait for new ARIS releases to get new artifacts in the ARIS meta model. They will be completely independent in the definition of the meta model itself.

5.4 SPREADSHEET

The extended table framework will enhance ARIS modeling with spreadsheet capabilities. You'll be able to combine attributes of ARIS models and objects with other data and calculate for further results. The results can easily be re-used for further analysis and dashboarding with ARIS MashZone. This ensures that planning scenarios based on structured ARIS models, such as process-cost analysis, project management or simulation-based calculation, are supported with calculation formulas and spreadsheet templates.

5.5 BPMN 2.0 SIMULATION

Look for more functionality is you use Business Process Modeling Notation (BPMN) 2.0 notation for business modeling as well as BPA. All BPMN 2.0 models will have the same functionality for simulation that is offered for traditional ARIS model types. Software AG plans to extend the scope of BPA to human resources planning and identifying bottlenecks. Our approach will offer an alternative to the more technical/IT-oriented way of process reengineering and automation. You'll be able to:

- Simulate BPMN 2.0 models to assess as-is and to-be processes according to feasibility and efficiency, i.e., cost, execution times, and resource usage or utilization. You'll be able to observe the behavior of the analyzed system over time—for example, see how a process recovers from demand peaks or resource breakdowns. This makes it possible for you to improve business processes and resource deployment.
- Conduct a quantitative analysis of BPMN 2.0 models via the dynamic animation of models and output of cumulated simulation statistics at runtime. Create different types of charts, such as pie, line and column.
- Create and deploy “what if” experiments in BPMN 2.0 models to gain insight to the effects of factor variations—for example, what happens when you remove a resource from a process. You'll be able to output statistics in Microsoft® Excel® to improve decision-making.

5.6 CENTRAL ADMINISTRATION AND USER MANAGEMENT COMPONENT (UMC)

Solution scenarios and use cases, such as Model-to-Execute (M2E), Process Intelligence (PI), Governance, Risk & Compliance (GRC) and EA, rely on the integration of multiple ARIS components and have become integral to the design of ARIS offerings. They'll continue to shape the future portfolio. Because of this, you'll need central administrative functions, such as user management, document management and license management.

That is why ARIS 9 will come with a central User Management Component (UMC) and document storage system that works across all ARIS components, from ARIS Business Server and modeling clients, ARIS Process Governance to ARIS MashZone and ARIS PPM. Cloud-based modeling and publishing will work with the UMC.

The UMC will facilitate central authentication, such as. Single Sign-On (SSO), across ARIS components. It will offer central administration of user data so you can, for example, create, update and delete user data in one single storage. Beyond user management, UMC will allow for central license management to provide transparency across license data to improve administration of the ARIS Platform. You'll be able to give administrators control to distribute license data across users centrally. ARIS document storage will enable users to share and link to documents across ARIS software components without a dedicated document management system.

Central administration services will enhance ease-of-use in all cross-product use cases both for an administrator and a user. For example, in the case of the EA solution, using ARIS IT Inventory, ARIS IT Architect and EA dashboards in ARIS MashZone will become a more seamless experience with SSO. Users won't have to log into multiple ARIS installations. Further, central administration services will facilitate collaboration when there are multiple installations of ARIS Business Architect and Designer.

The UMC will consolidate user profiles across ARIS databases resulting into SSO to all databases. Document storage will give documents a home and make cross-database usage of documents easy. Finally, consolidating both storage and user interfaces also will simplify ARIS administration and reduce the effort to distribute and manage licenses.

In summary, central administration services will save you time and effort in using and administering an ARIS system landscape across multiple ARIS client installations. From a user perspective, they will contribute to a more seamless, solution-oriented and collaborative experience. For administrators, they'll reduce the workload because they will reduce inconsistencies in license and user data, help you avoid redundancies and provide more transparency across ARIS databases and ARIS components.

5.7 ARIS PROCESS GOVERNANCE

ARIS Process Governance will continuously improve in both technological and functional terms as ARIS 9 offers a greater focus on cloud-based scenarios.

ARIS Process Governance will support:

- **Controlling governance processes:** ARIS Process Governance will implement an increasing number of governance use cases that go beyond ARIS Business Architect and involve multiple ARIS components (e.g., M2E and IT planning). Enhanced connectivity to ARIS PPM and additional integration with ARIS MashZone via report scheduling will allow for extended control and dashboarding of governance processes.
- **Cloud enablement:** ARIS Process Governance will become an integral part of a new cloud-based modeling and publishing solution. You'll be able to use it to coordinate internal administrative processes that run in the background. It will also enable BPM governance processes that are well integrated into the cloud-based modeling and publishing client. Lastly, the process board will see a technological shift towards HTML 5 to integrate better with Web-based environments in the cloud.
- **Central services:** Increased integration of ARIS Platform components requires central administration of user data and document storage. With ARIS 9, ARIS Process Governance will provide both components (user management and document storage) to be used by all ARIS components. (See section on Central Administration and User Management Component (UMC) for more details.)

Extending the footprint of ARIS Process Governance across ARIS Platform components (including a cloud-based solution) will make process governance central to all use cases, ranging from BPA, EA, GRC and M2E to PI. These use cases will benefit from more central administration capabilities and more flexible integration even with cloud technology. Enhanced monitoring and dashboarding of governance processes with ARIS PPM and ARIS MashZone acknowledges the maturity and complexity of BPM governance in many organizations.

5.8 EA DASHBOARDS

Establishing and driving an EA management practice is a time-consuming process with significant investments. EA dashboards can help document the value of these investments and also provide value to the stakeholders using them. A library of typical best practice EA dashboards based on ARIS MashZone will help ramp up EA projects around topics like application portfolio management, business demand management, IT strategy management and IT project alignment. These dashboards will be based on ARIS standard reports and the methodology documented in IT user guide available in ARIS help.

6 OPEN BPM WITH ARIS

Providing ARIS process models enriched with services to process automation projects in any outside BPM system has always been the major use case of ARIS in Service-Oriented Architecture (SOA)-related projects. The upcoming release of ARIS will re-enforce this use case while aligning the underlying tool architecture with the Software AG product portfolio.

With ARIS 9, the SOA and process automation capabilities of ARIS will focus on Event-driven Process Chain (EPC) and BPMN as business and logical notations to prepare for process automation projects. Capabilities available in ARIS-webMethods projects will also be available for non-webMethods projects due to these features:

- ARIS-CentraSite connectivity will map CentraSite software services with ARIS business services to request service development and update and synchronize CentraSite software services with ARIS.
- EPC2BPMN transformation will generate BPMN process models out of EPC process models based on preconfigured patterns. This will include a syntax validation and bilateral navigation.
- BPMN 2.0 export will enable you to export BPMN process models, including software services, into a serialized XML format that can be fed into any BPM system that runs on BPMN.

By supporting BPMN 2.0 on a full scale—from business process modeling in EPC over BPMN 2.0 modeling to BPMN 2.0 serialization, ARIS will offer business-driven process automation independent from the target BPM system. CentraSite will add a full service registry to the solution. Thus, service and process development life cycle will be integrated and connected. Both will foster continuous business-IT alignment acknowledging different stakeholders with different objectives and tools.

7 MODEL-TO-EXECUTE (M2E)

Among multiple use cases for process modeling in ARIS, process automation (i.e., the technical implementation of process into a BPM system) will be a very prominent target for process models. In that respect, business analysts will be able to use ARIS to gather process requirements in business process models. Those models drive implementation work in webMethods Business Process Management System (BPMS). With ARIS 7.2, ARIS integrates with webMethods BPMS to facilitate process sharing among business analysts, process engineers and software developers for the sake of process automation. This integration goes beyond singular top-down hand over into a full synchronization of models (roundtrip).

With ARIS 9, the M2E capability will be further enhanced specifically in terms of ease-of-use and extended model roundtrip functionality.

As a result, you'll be able to:

- Easily keep track of the implementation status of a process model and governance workflow that integrates all stakeholders and tools, thanks to visual control provided by an ARIS dashboard). This will improve accessibility to tasks. UI polishing will further improve the user experience. Also, free-text notes attached to models will further facilitate business-IT collaboration. A configuration assistant will support users to set up their M2E environment with all configuration settings for both ARIS and webMethods.
- As for the process roundtrip, keeping refined technical process steps in the BPMN mapped to one business process step in the EPC (1:n relationship) will be another new feature you can use to refine processes towards the technical ability to execute without losing traceability into your business process models. Also further enhanced BPMN2EPC transfers will support more complex types of process changes to be updated into EPC. Re-documentation of webMethods process models in ARIS as well as BPMN 2.0 export from ARIS will offer two additional entry and exit points of the model roundtrip.
- Separating service management from process roundtripping reduces complexity and gives you a flexible handle on how to set-up your Business-IT alignment.

The additions to the M2E capability of ARIS and webMethods BPMS will contribute to the overall user experience and strengthen the case of business-driven process automation.

8 ARIS FOR SAP HIGHLIGHTS

Use SAP? You'll benefit from many enhanced ARIS 9 features for process-driven SAP management with SAP® Solution Manager and model-driven process execution with SAP NetWeaver® BPM (M2E). To correspond with new functionalities offered in SAP® Solution Manager 7.1, Software AG is expanding the scope of the SAP® Solution Manager synchronization so you can:

- Synchronize customer and global attributes. You'll be able to: define additional information during the project; use standard ARIS attributes to maintain them on both sides; map them and exchange the values with the SAP project team; publish them to end users; and also set and communicate global attributes across various roll-out projects.
- Upload any document stored and linked in ARIS to SAP® Solution Manager using bi-directional exchange of various documents (project, testing and training). This will give the project team additional process-related documentation for configuring SAP and can be used to automatically create and upload required documents, such as test-case descriptions or RICEF documentation from ARIS using reports. You'll save a lot of manual work during the project by automating many steps and re-using processes models for SAP blueprint requirements.
- Define and synchronize the required interface scenarios and SAP authorizations using the information modeled in ARIS. You can then transfer this information into SAP® Solution Manager making sure that the requirement definition and configuration are in sync. Re-using the modeled information for defining these RICEF requirements can save valuable time and makes sure that the requirements from the business are taken into considerations during implementation.

Additionally, BPMN 2.0 customers will be able to use all ARIS for SAP functionalities, including SAP-related process modeling, the SAP® Solution Manager short-cut concept, synchronization with SAP® Solution Manager, process-driven testing using ARIS Test Designer and publishing. You'll be able to use either EPC or BPMN as your process-modeling method.

Three other key features will be enhanced to improve ease of use and flexibility and to speed up performance:

- A new ARIS online guide will be based on the new Rocket Search functionality. This will make it easier to implement, adjust and use this proven functionality.
- ARIS for SAP administration will be improved so all relevant data can be centrally managed for multiple projects and with less effort.
- ARIS Test Designer functionality will be improved based on project experience, enhancing cross-model loops, the ability to select events and use different methods, and VACD-based test path capturing.

You'll also be able to export models that are non-standard SAP processes via a BPMN 2.0 interface and import them into SAP NetWeaver® BPM for process execution. This gives our SAP customers the chance to re-use business requirements defined in ARIS models for the definition of "own practice" scenarios and enable their process automation effort via M2E.

9 GOVERNANCE, RISK & COMPLIANCE (GRC) HIGHLIGHTS

9.1 REAL-TIME GRC/REAL²GRC

Connecting ARIS Risk & Compliance Manager and the webMethods middleware layer will allow for full integration of business operations and GRC management. It will enable real-time response to risk levels or control exceptions and capabilities in regard of automating GRC through Continuous Controls Monitoring (CCM), Continuous Risk Monitoring (CRM) or Continuous Exception Monitoring (CEM).

Real-time response will enable you to realize both detective and preventive GRC management. You'll be able to automate tasks to increase productivity. Additionally, gaining transparency into every single process and gaining 100 percent sample size will enable your business to make better decisions.

9.2 ENHANCED AND IMPROVED ANALYSIS

More predefined evaluations and reports will enable ARIS MashZone to access all elements in ARIS Risk & Compliance Manager. As a result, you'll be able to improve how you use the content and information gathered and stored in the software. Having better access to GRC-relevant information "out of the box" will reduce time to operations and improve customization. You'll also gain more flexibility to create your own evaluations and reports. Easy and seamless integration of risk and compliance-relevant data with business data will enable better role-specific access. You'll be able to adapt reporting needs faster using dashboards.

10 PROCESS INTELLIGENCE (PI) HIGHLIGHTS

10.1 UNIFIED PI

ARIS 9 will unify your approach to PI. A seamless user experience will assure both business users and process owners use PI. A business user will be able to detect performance issues, visualize them in a dashboard, analyze and report on performance. They'll also get alerted when processes get out of control. ARIS MashZone, ARIS PPM, webMethods Optimize and webMethods Business Events will be based on the same performance data. SSO and context sharing will make it easy to switch between tools.

10.2 BUSINESS AND DATA ANALYTICS

ARIS PPM will offer enhanced process analytic and reporting capabilities. With the next major release, you'll be able to easily measure and monitor performance from data-driven, process-driven and collaboration-driven points of view. This will allow you to perform new kinds of performance analytics. You could, for example, set the performance of a sales process or any other business process using the appropriate KPI based on the desired outcome, such as booked revenue.

10.3 ARIS MASHZONE INTEGRATION AND "ANALYTICS ANYWHERE"

ARIS MashZone will continue its success as a standalone product for self-service dashboards. In addition, ARIS MashZone will be much more integrated into the ARIS Platform as well as the PI stack.

Integration with ARIS and PI will enable seamless user management, including SSO, cross-product navigation and out-of-the-box dashboards. To support such scenarios, ARIS MashZone will introduce two new data sources: one to query ARIS repository contents and another for webMethods Optimize. The ARIS data source will enable users to consume queries created by BPA/EA intelligence.

Enhancements of ARIS MashZone 9.0 will enable ARIS and PI users to visualize and publish their data in interactive dashboards. You'll be able to gain insight into your ARIS repository by crafting analytical dashboards to reveal hidden dependencies and correlations. As such, dashboards can be published to the entire enterprise using SSO or to well-defined parts to increase transparency and visibility.

11 YOUR NEXT STEPS

Keep up with what's new with ARIS 9. Learn more by talking to your Software AG representative, and visit www.softwareag.com to get updates on webinars and other valuable resources to help you apply this new functionality to meet your business goals faster.

TO FIND THE SOFTWARE AG OFFICE NEAREST YOU,
PLEASE VISIT WWW.SOFTWAREAG.COM

Take the next step to get there – faster.

ABOUT SOFTWARE AG

Software AG is the global leader in Business Process Excellence. Our 40 years of innovation include the invention of the first high-performance transactional database, Adabas; the first business process analysis platform, ARIS; and the first B2B server and SOA-based integration platform, webMethods.

We offer our customers end-to-end Business Process Management (BPM) solutions delivering low Total-Cost-of-Ownership and high ease of use. Our industry-leading brands, ARIS, webMethods, Adabas, Natural, CentraSite, Terracotta and IDS Scheer Consulting, represent a unique portfolio encompassing: process strategy, design, integration and control; SOA-based integration and data management; process-driven SAP implementation; and strategic process consulting and services.

Software AG - Get There Faster

© 2012 Software AG. All rights reserved. Software AG and all Software AG products are either trademarks or registered trademarks of Software AG. Other product and company names mentioned herein may be the trademarks of their respective owners.