

EPC in ARIS

General information

The **Event-driven Process Chain (EPC)** is a modeling notation to describe business processes. It integrates all relevant business perspectives and is embedded in the overall process landscape.

While **Value-added Chain Diagrams (VACD)** provide an overview of the functional areas of an organization, EPCs are used to detail them at a procedural level.

Core elements

The EPC core elements allow you to model the procedural sequence of functions within the scope of individual business processes.

Event & functions

An **event** describes a state that controls or influences the progression of the process. They trigger functions and are the results of functions.

A **function** is a task or activity performed to deliver process outputs and support business objectives.

Connectors

Connectors are used to **split** and **join** the control flow. Split connectors have one incoming and several outgoing connections. Vice versa for join connectors.

XOR (exclusive or) considers exactly one path.

AND considers all paths.

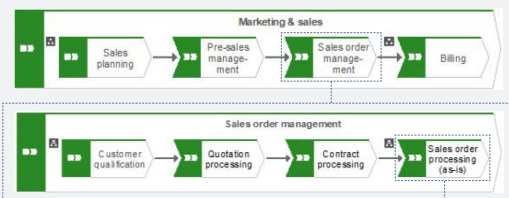
OR considers at least one path.

Linking & hierarchy

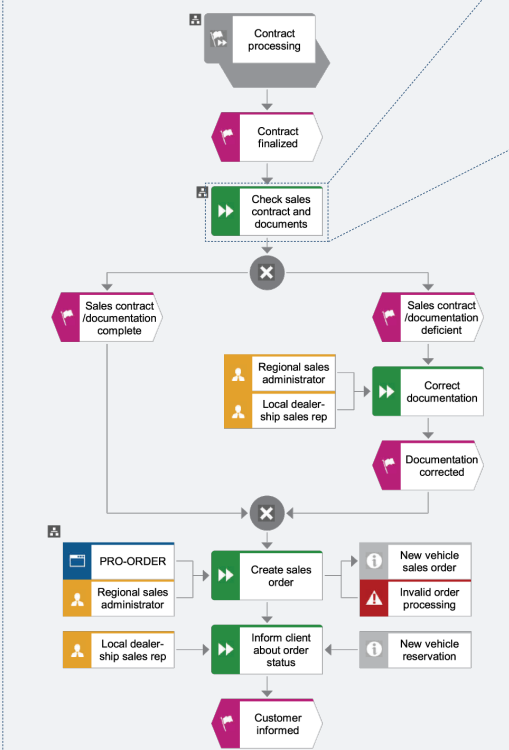
Process interfaces link EPCs on the same process hierarchy level and navigate in a **horizontal** fashion.

Lower-level EPCs can be **assigned to functions** to describe them on a more detailed level. This provides a deeper process hierarchy level (**vertical** link).

Value-Added Chain Diagram (VACD)



Event-Driven Process Chain (EPC)

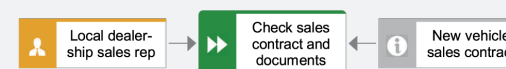


Extended elements/satellites

The extended EPC elements allow you to detail the pure procedural description of your business process by integrating data, risks, resources, organizational elements, etc. The corresponding objects are called **satellites**. There are two modeling alternatives:

1. Model the satellites directly **in the EPC** and assign them to the function to get all information at a glance.
2. Move the satellites to a **Function allocation diagram (FAD)** to reduce the visual complexity of the EPC.

Function Allocation Diagram (FAD)



Organization

Organizational unit is a unit in an organizational hierarchy. It can be used to show which organizational units are superior to others.

Position is the smallest organizational unit in a company.

Persons can be assigned to an organizational unit.

Groups of persons can be combined in a **role**.

A **location** refers to a physical place and can be a factory, a building, or also an office.

RACI/RASCI connections

The **RA(S)CI method** enables you to simply describe how organizational elements participate in completing tasks in business processes. The EPC offers different connection types to connect organizational objects and functions:

carries out **R**ESPONSIBLE
 decides on **A**CCOUNTABLE
 contributes to **S**UPPORTIVE
 has consulting role in **C**ONSULTED
 must be informed about ... **I**NFORMED

Data & risks

An **information carrier** stores knowledge/data.

A **cluster** is a collection of related entity types and can be used to represent business objects.

A **KPI** instance indicates the degree of goal accomplishment.

A **risk** represents the possible danger of a defined process objective not being achieved.

A **business policy** is a directive, whose purpose is to govern or guide the enterprise.

A **requirement** is a documentation of what a specification application system, product or service should be or do.

Enterprise architecture

The **application system** type is a software system that is used to support the execution of a function.

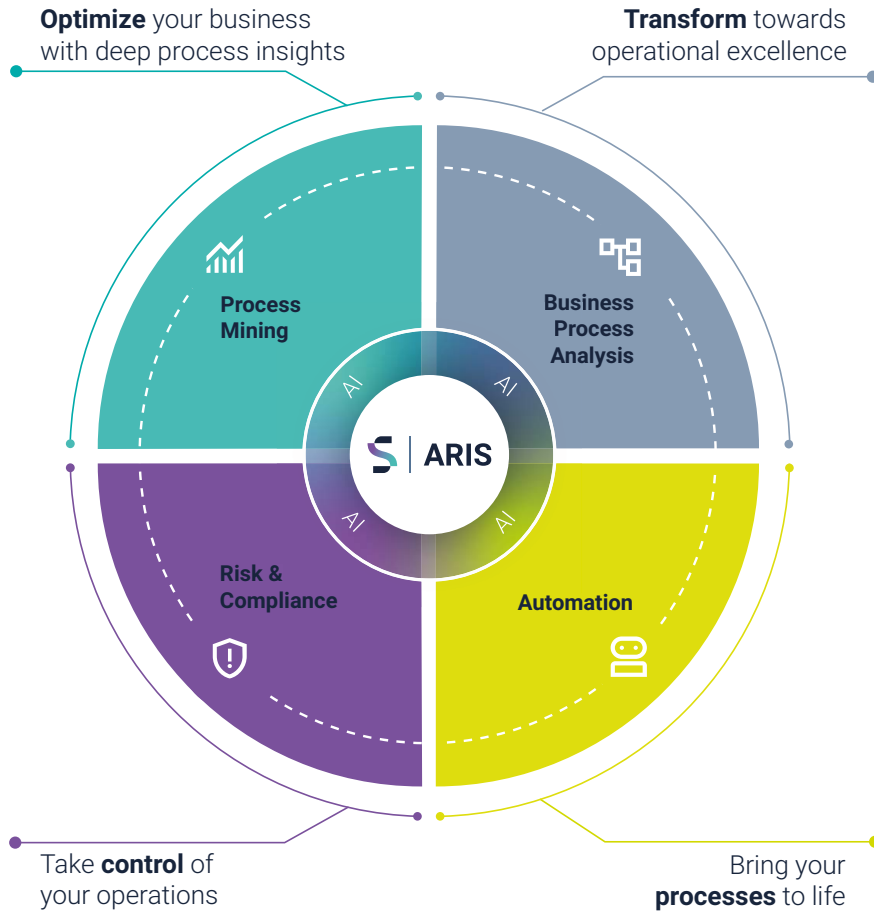
An **application system** represents a concrete, identifiable application system within a company.

A **software robot** is an application system type that carries out a function autonomously (RPA).

An **attended software robot** is a software robot (RPA) that requires human intervention.

An **IoT object** represents a type of things that are elements of IoT and have similar properties.

ARIS Transformation Suite



Take the next steps

Visit us at [aris.com](https://www.aris.com)



Follow us on [LinkedIn](#)



Check out more [cheat sheets](#)



Receive regular [ARIS news](#)



Join the largest [BPM community](#)



ABOUT ARIS

The ARIS Suite gives organizations the intelligence needed for a detailed understanding of their processes, a clear path for improvement and the assurance that they are in control of their operations.

© 2024 The name Software AG and all Software GmbH product names are either trademarks or registered trademarks of Software GmbH and/or its subsidiaries and/or its affiliates and/or their licensors. Other company and product names mentioned herein may be trademarks of their respective owners.