



ARIS Integration Scenarios

Overview of ARIS Integration & Data Exchange Capabilities

AGNL, 20 June 2024



Always start with the WHY

Not every scenario requires an API...

Although ARIS is positioned as a **Single Point of Truth**, it is inherently part of a **federated** ecosystem or toolchain where ARIS caters for coherence and brings together the operating model and enterprise architecture.

Therefore, ask yourself:

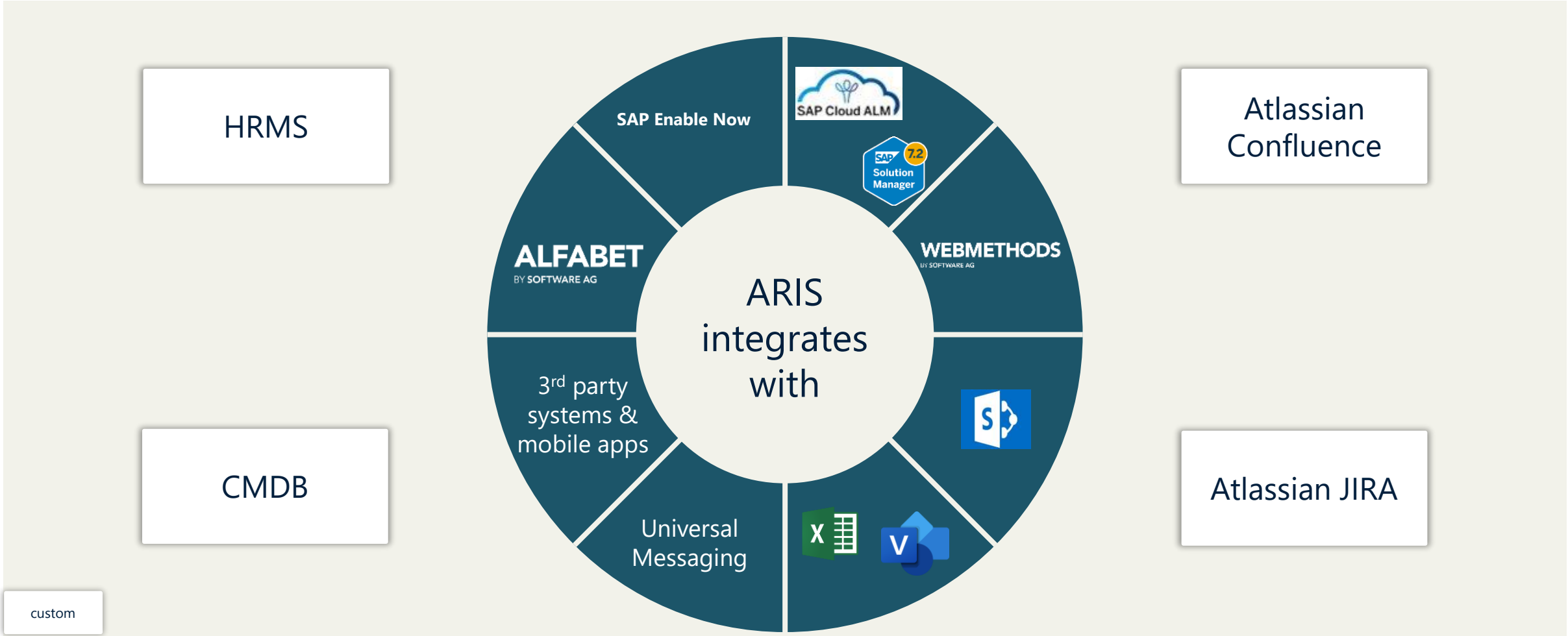
What are my golden sources?

Then identify **what** needs to be synchronized and **how often**? Where is data **created**? Where is data being **used**?
→ can be uni-directional or bi-directional

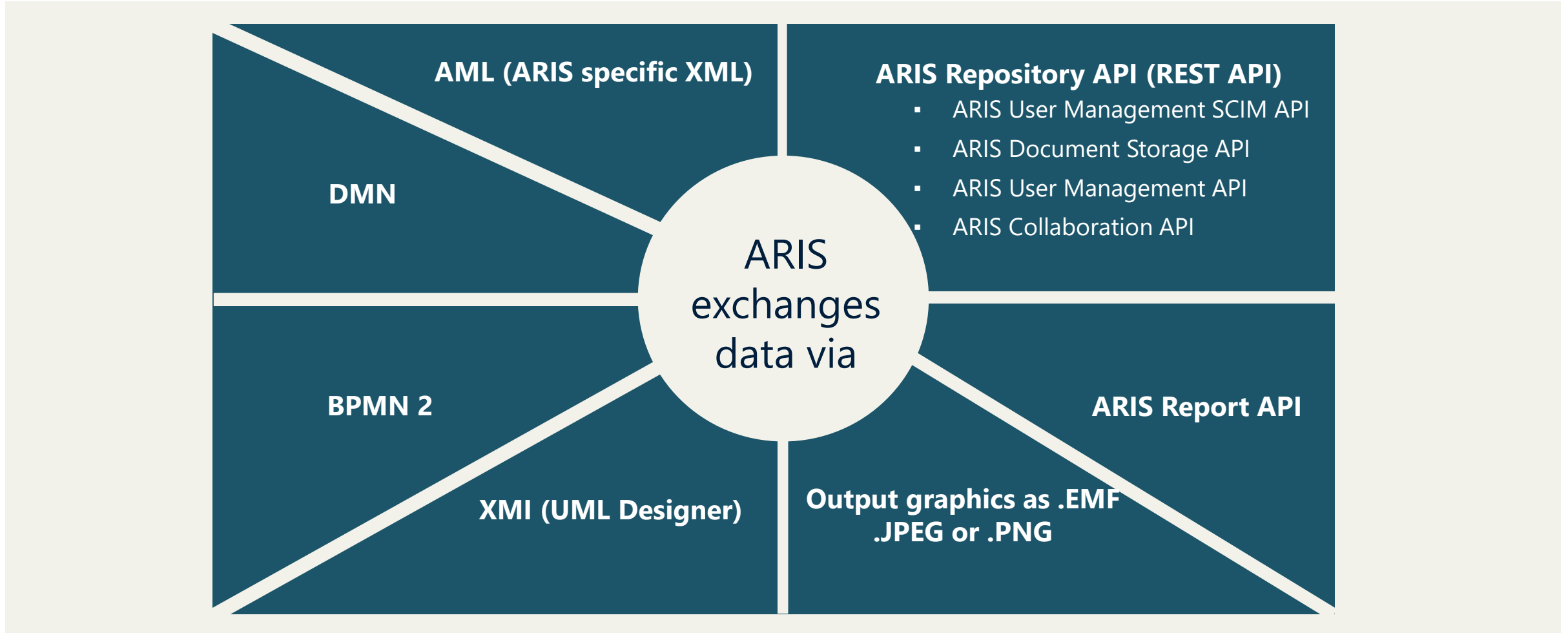
Considerations:

- Volume
- Frequency
- Data quality
- Governance / Maturity
- Cost

ARIS standard integrations



Available data exchange formats & APIs



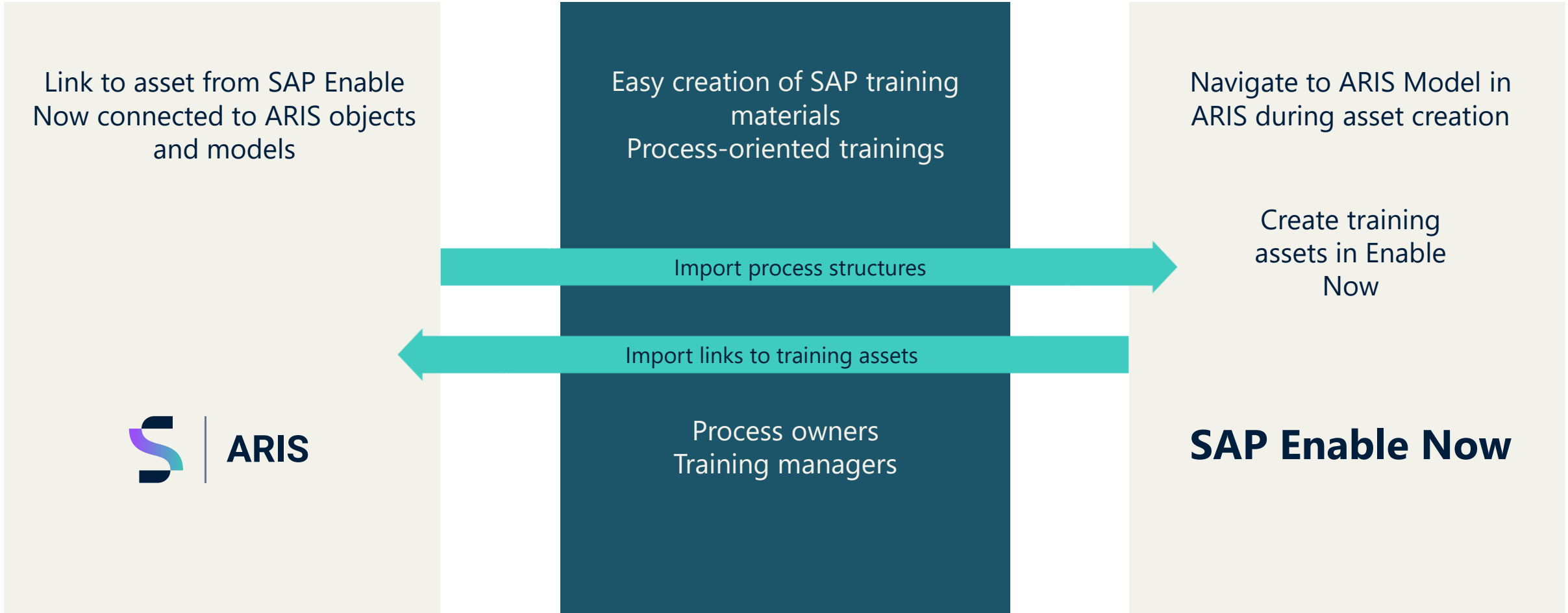
A black and white photograph of a modern concrete interior. The scene features a series of diagonal concrete beams that create a sense of depth and architectural structure. The lighting is dramatic, with strong shadows and highlights on the concrete surfaces. A dark blue rectangular box is overlaid on the left side of the image, containing the text 'Standard integrations' in white, bold, sans-serif font.

Standard integrations

ARIS for SAP® Solutions

Integration with SAP Enable Now

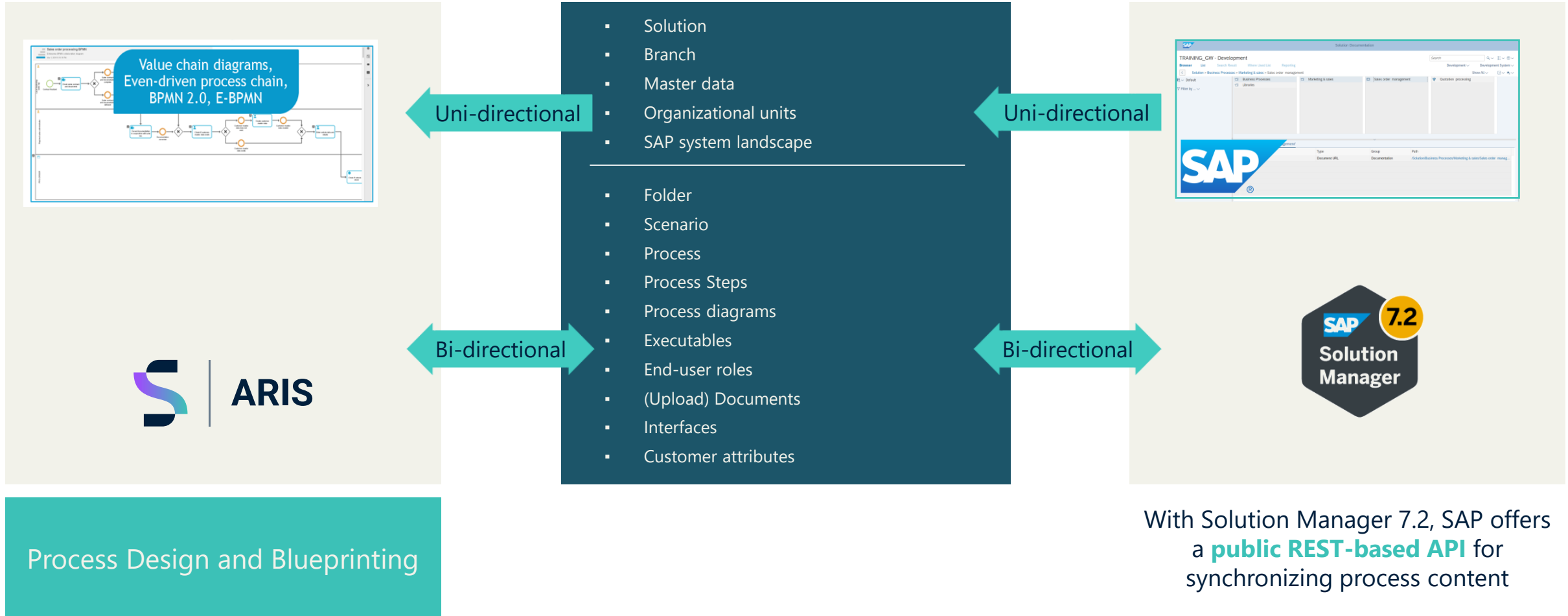
Use case
SAP rollout & process-oriented training



ARIS for SAP® Solutions

Integration with SAP Solution Manager

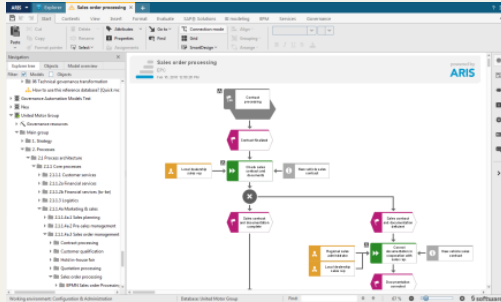
Use case
SAP implementation & SAP rollout



ARIS Alfabet

Data mapping & navigation

Use case
IT architecture planning



ARIS
repository



← navigate →

← systems, etc. →

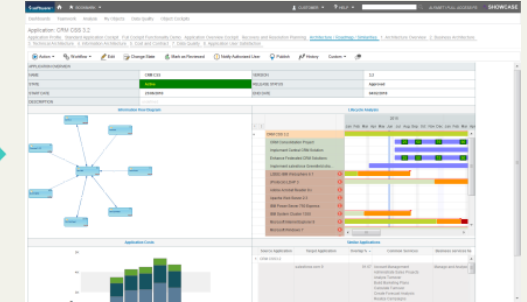
← processes, etc. →

- Reuse of data mastered by one system in the respective other
- Bi-directional link between assets
- Synchronization of information on request
- Reduction of data maintenance efforts
- Prevention of data inconsistencies

← navigate →

← systems, etc. →

← processes, etc. →



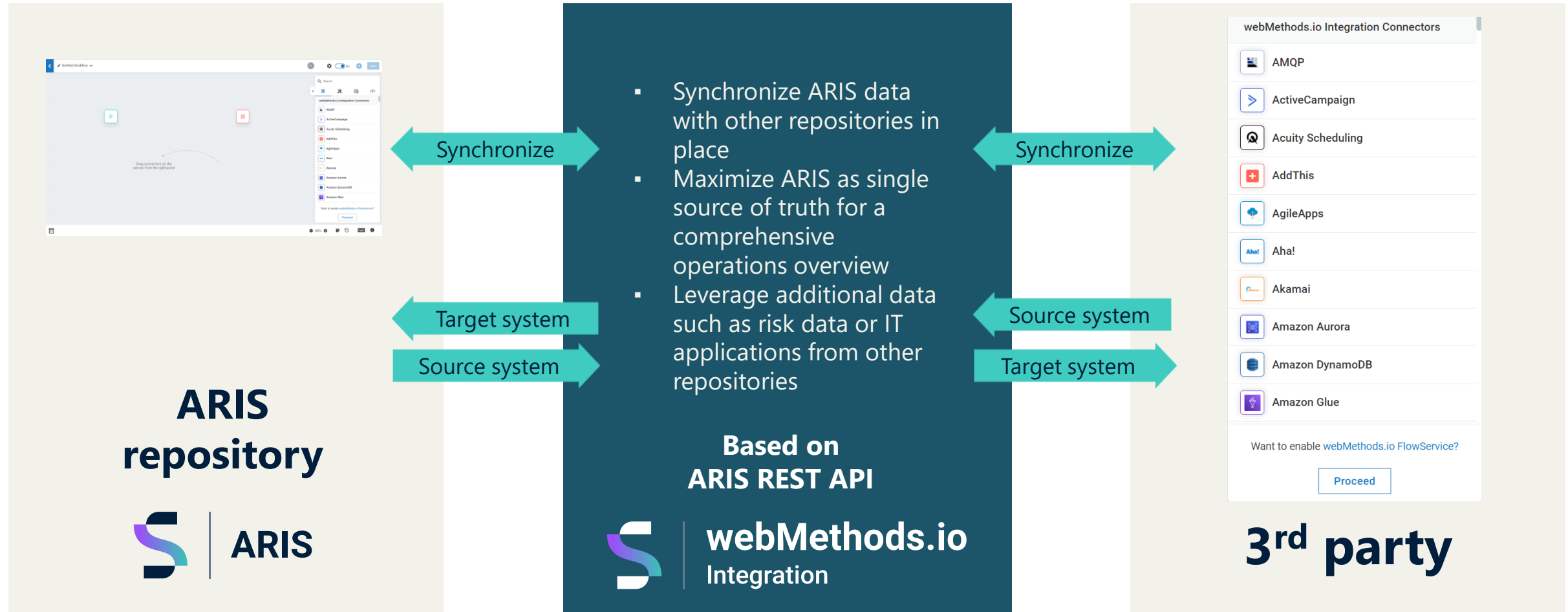
Alfabet
repository



webMethods.io Connector

Integration & connectivity

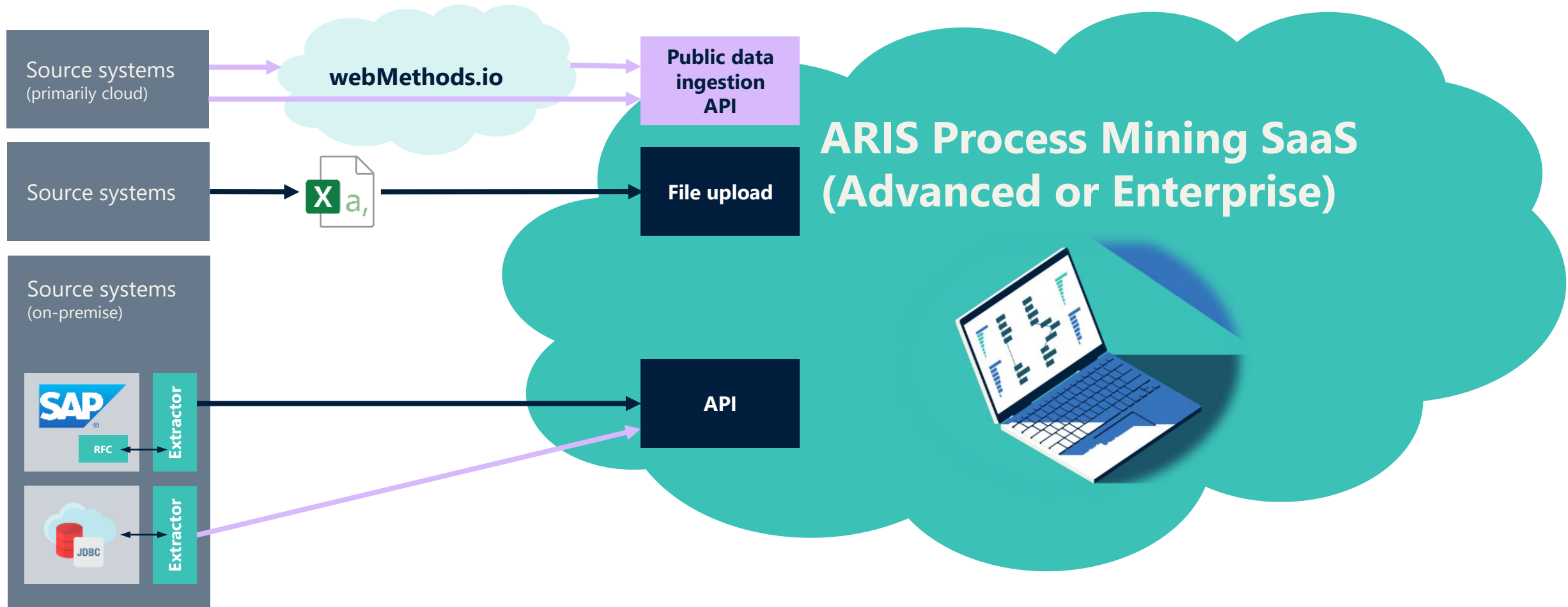
Use case
Business Automation & Connectivity



¹ The following licenses are required to get access to this feature: webMethods.io & ARIS Enterprise/ARIS Extension: 3rd party integration.

JDBC Extractor & Data Ingestion API

Public data ingestion API and JDBC extractor (e. g. for "data lakes") for extended data connectivity¹

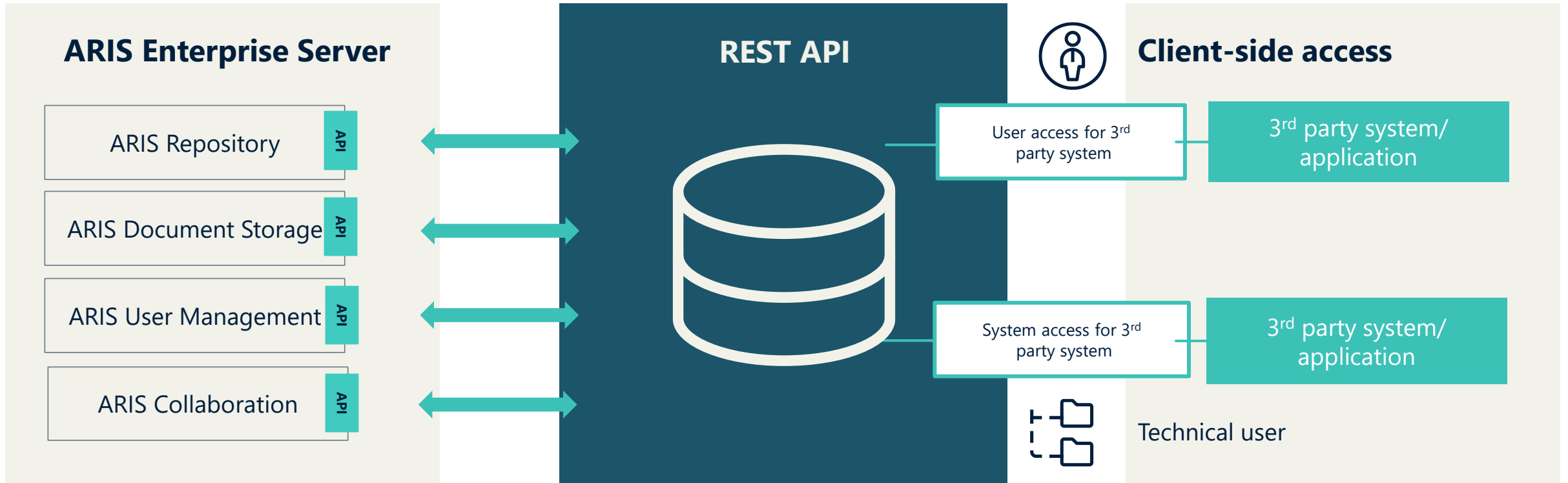


¹ The following licenses are required to get access to this feature: ARIS Process Mining Living Processes.

ARIS & 3rd party systems

REST API

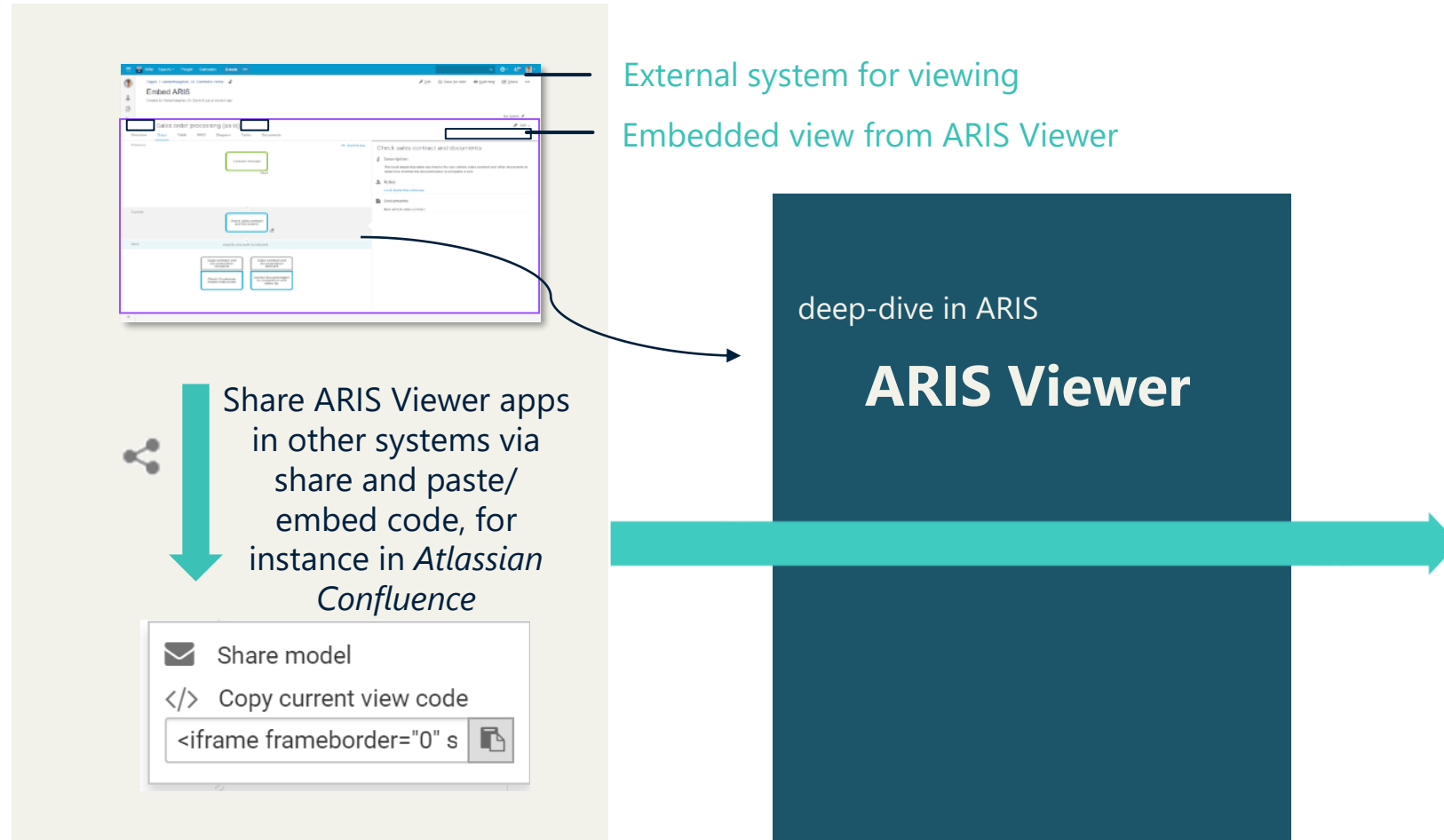
Use case
3rd party access



ARIS 3rd party integration

Embed ARIS UI in other systems

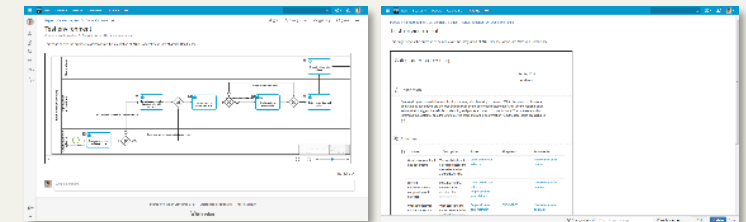
Use case
Single source of truth, spreading knowledge



Embed ARIS Viewer UI

Embed ARIS Viewer UI within external applications (e.g. Atlassian Confluence or MS SharePoint) to reach the daily work environment of business users; publish the

- Diagram
 - Steps view
 - Overview fact sheet
- within the 3rd party portal as simple as embedding a video player from popular video platforms like YouTube.

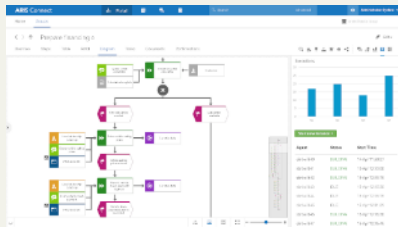


ARIS 3rd party integration

Embed other systems into the ARIS UI

Use case
Single source of truth, spreading knowledge

Embed plug-in directly into the ARIS Viewer User Interface



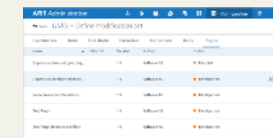
Embed the iframe component directly into the Viewer UI



Write a JavaScript based plugin that connects to a 3rd party system

Advantages:

- Update proof
- Embedded components can interact with each other
- Plugin can access external data sources or access ARIS data via Rest-API

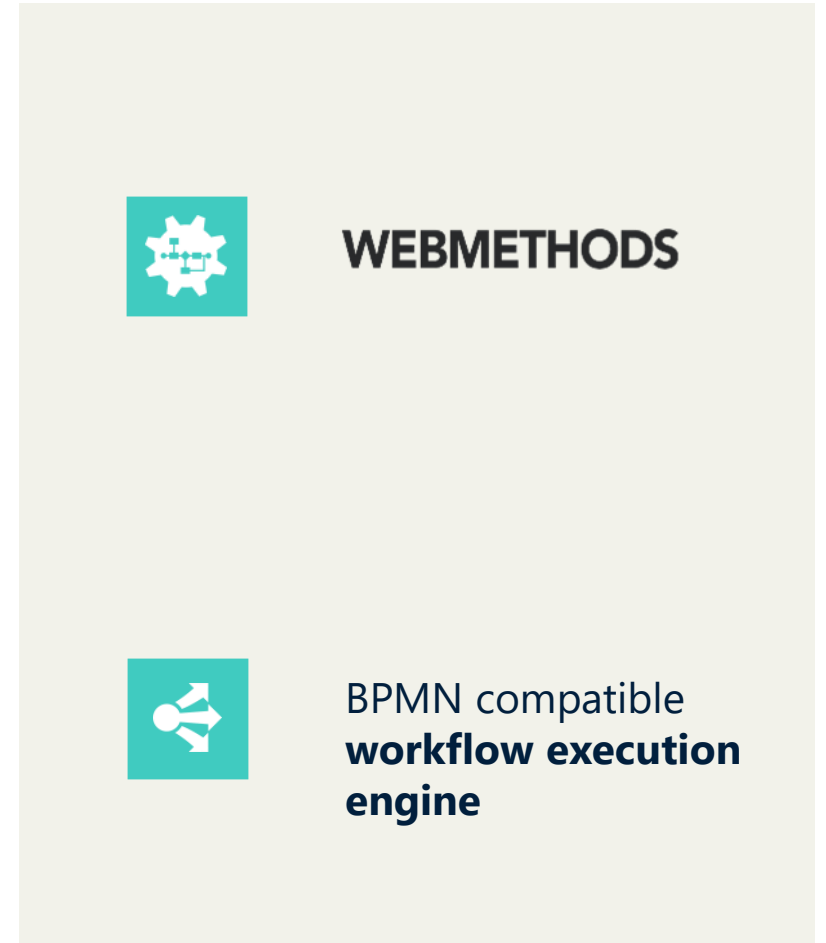
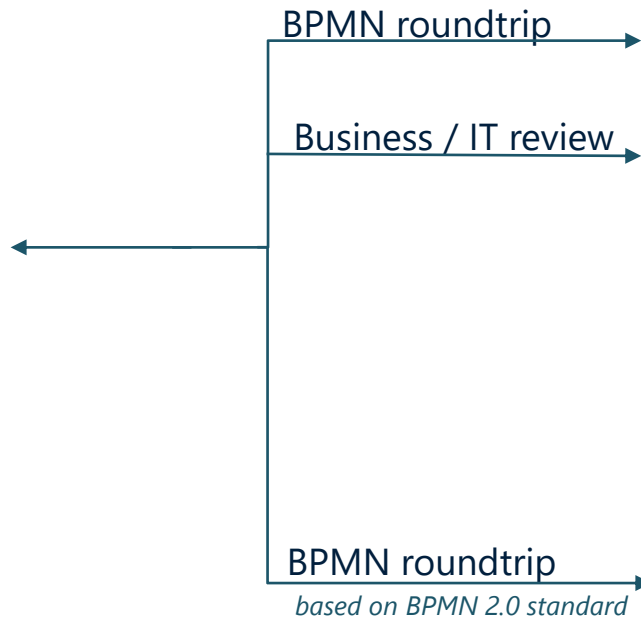
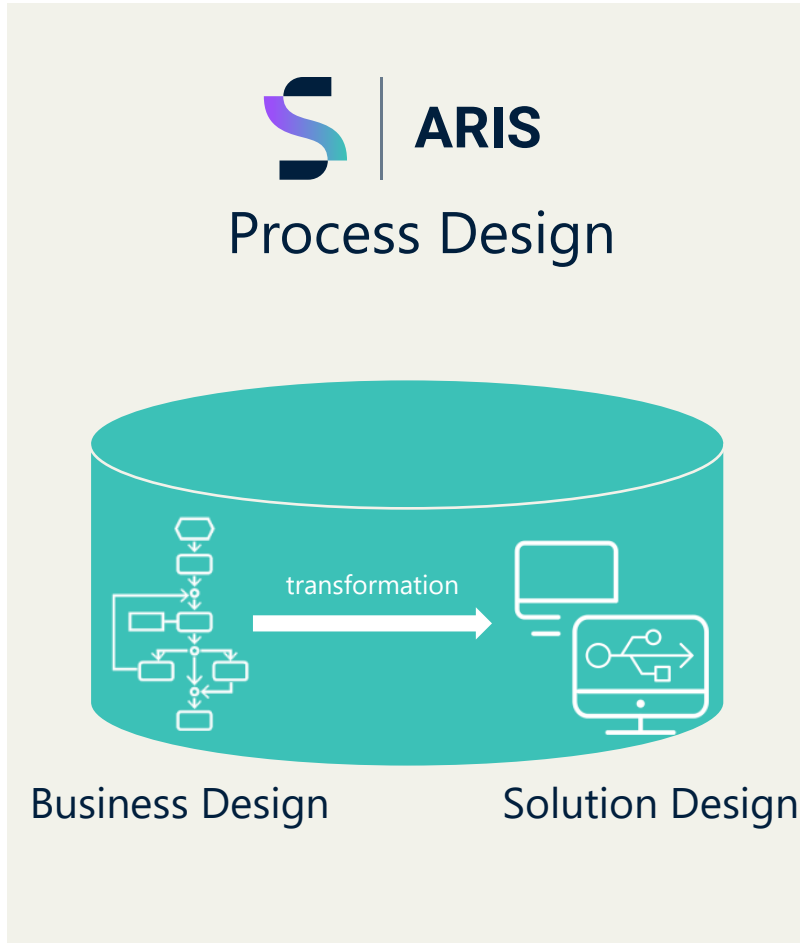


Use an iframe component for loading content from external systems

ARIS & 3rd party systems

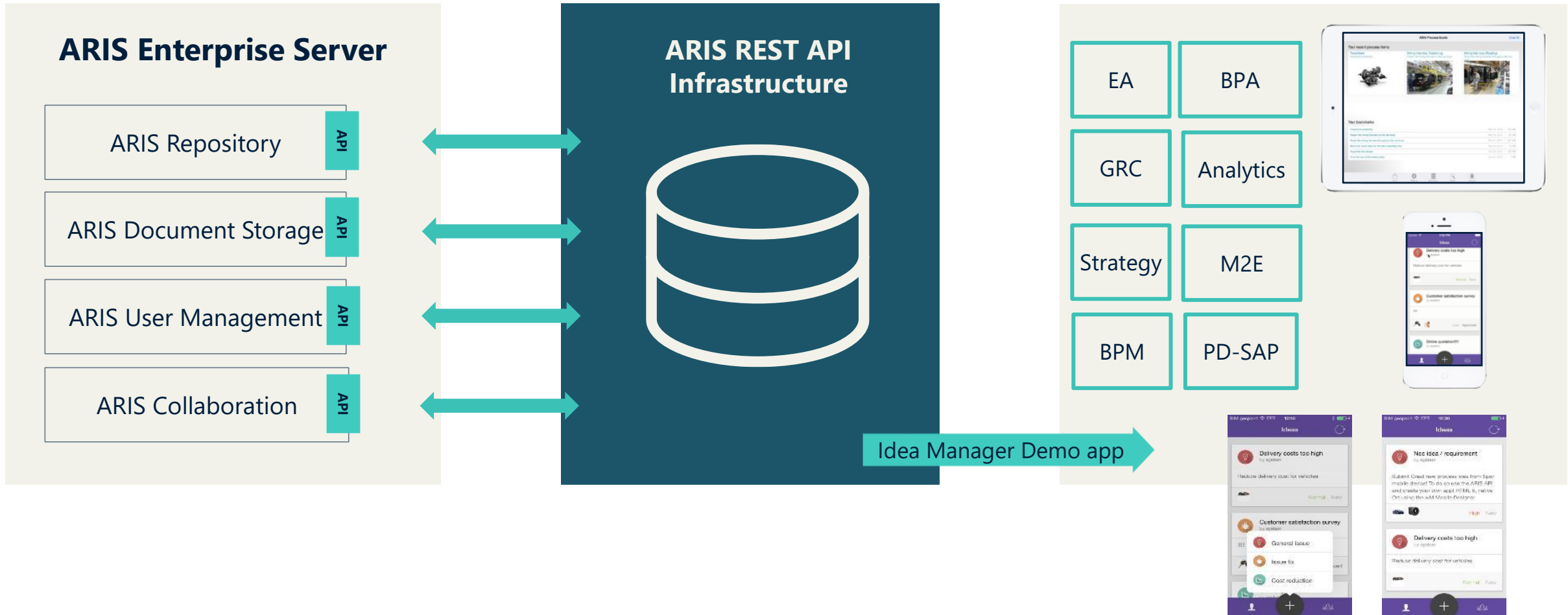
Automatic transformation & BPMN roundtripping

Use case
Quick start BPMN, roundtripping
BPMN 2.0, automation



ARIS mobile apps

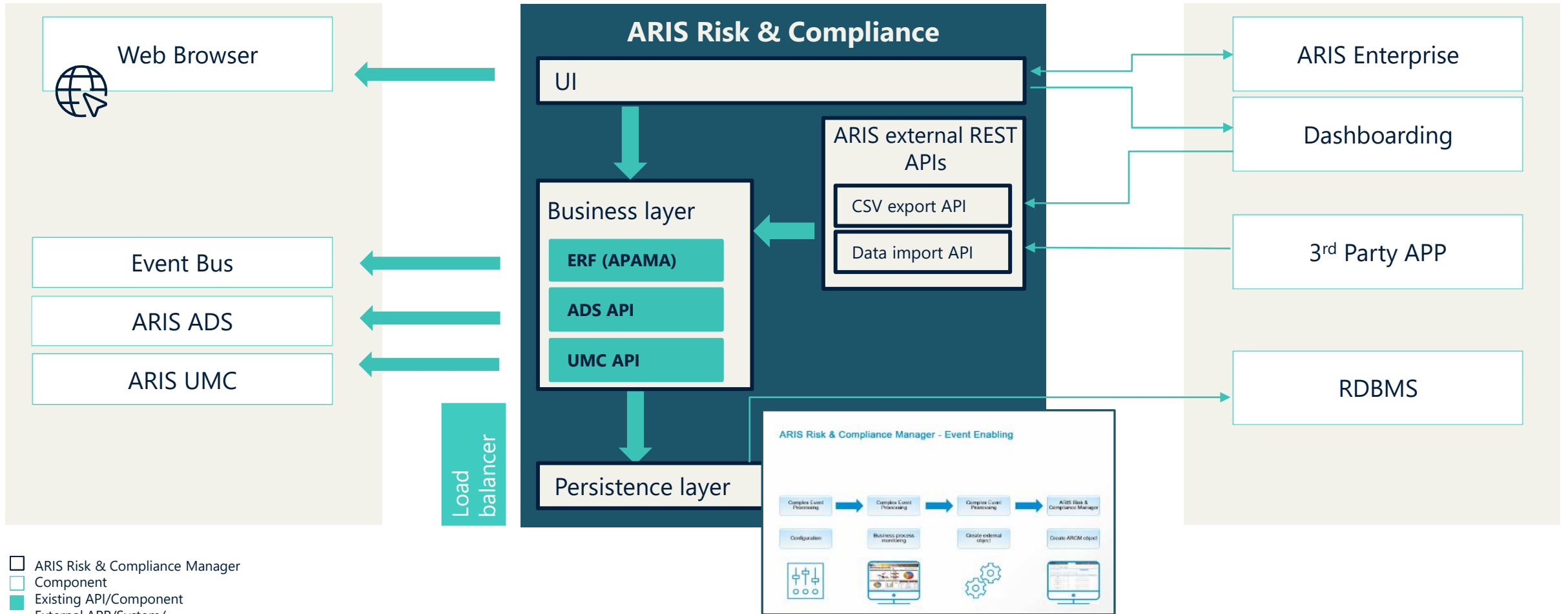
Use case
"On the run" access, Manage Ideas & requirements, picture to model



ARIS Risk & Compliance univ. messaging

Continuous monitoring via automatic event trigger

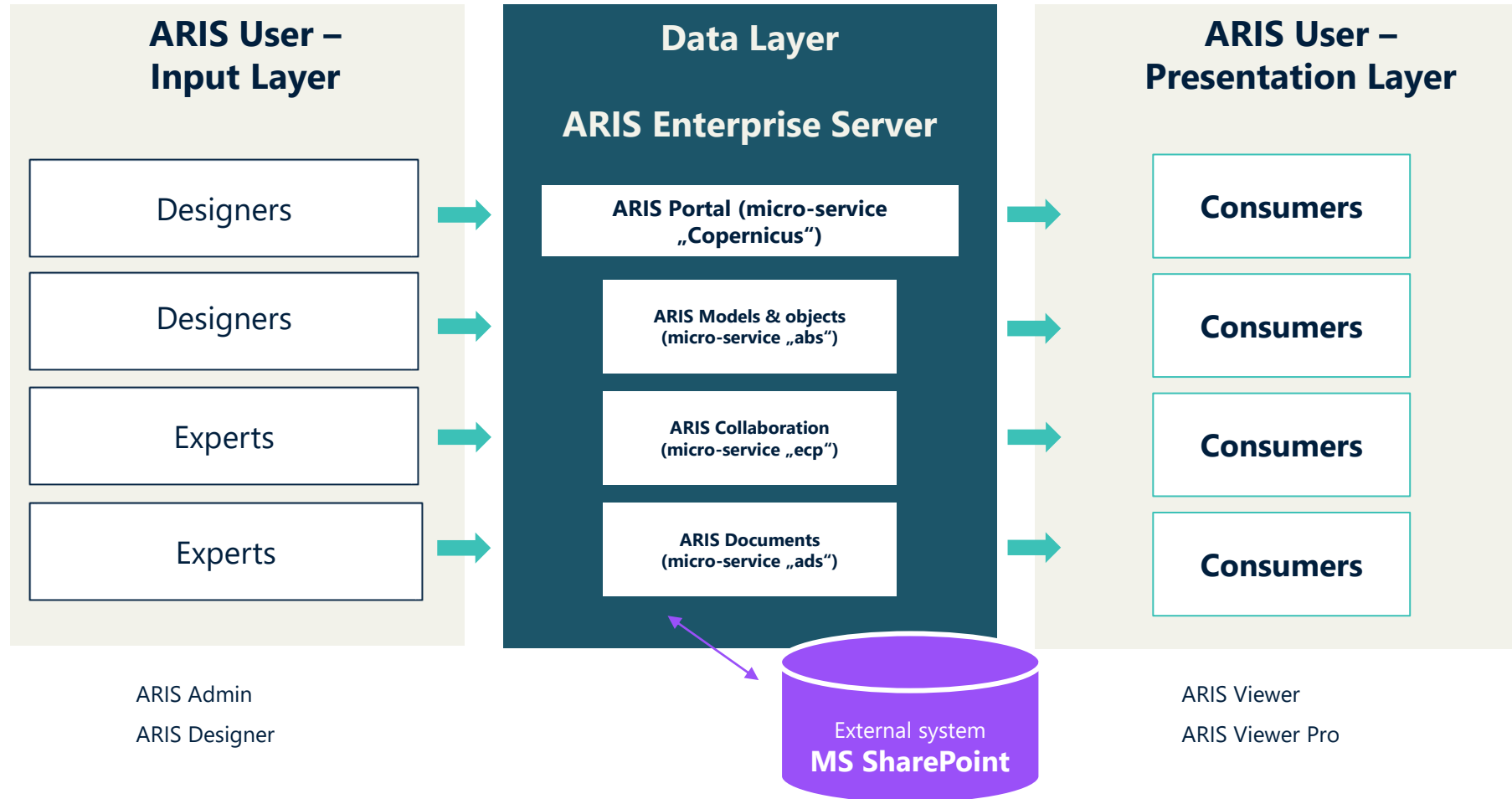
Use case
Real-time response systems, continuous monitoring of risk, controls & exceptions, task automation



ARIS MS SharePoint

Architecture & functional overview

Use case
Single source of truth, Enterprise mgt system & document mgt

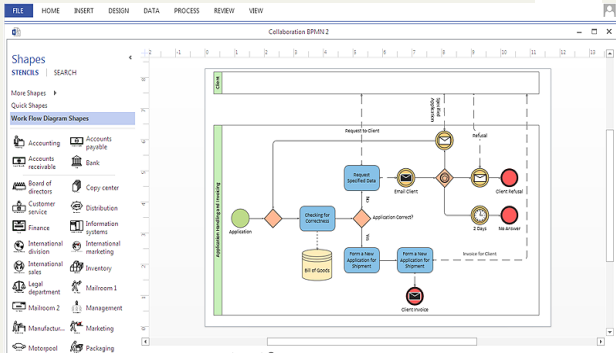


- Document input from the ARIS UI
- In text search from ARIS UI
- Document indexing of ARIS representation objects & SharePoint index
- Document security with individual user permissions
- In SharePoint only:
 - Workflow automation of documents
 - User dashboard
 - Customization
 - Workload
 - API

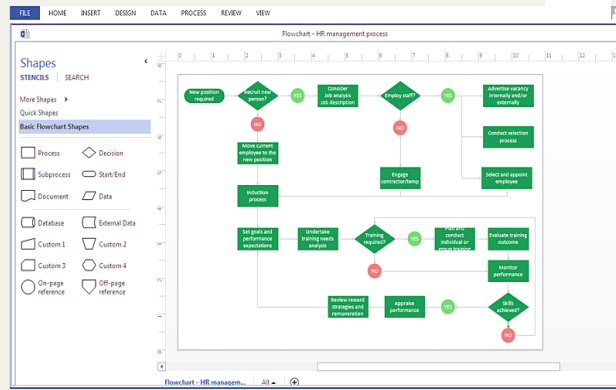
ARIS Visio

.VSD and .VSDX file import

Use case
Single source of truth, data import,
quick start BPM initiative



Visio (process) drawings



Prior to running the Visio import
a **mapping of Visio drawings** and its
shapes needs to be done in ARIS to
create the correct model types, object
types, symbols, attributes

ARIS Enterprise Server

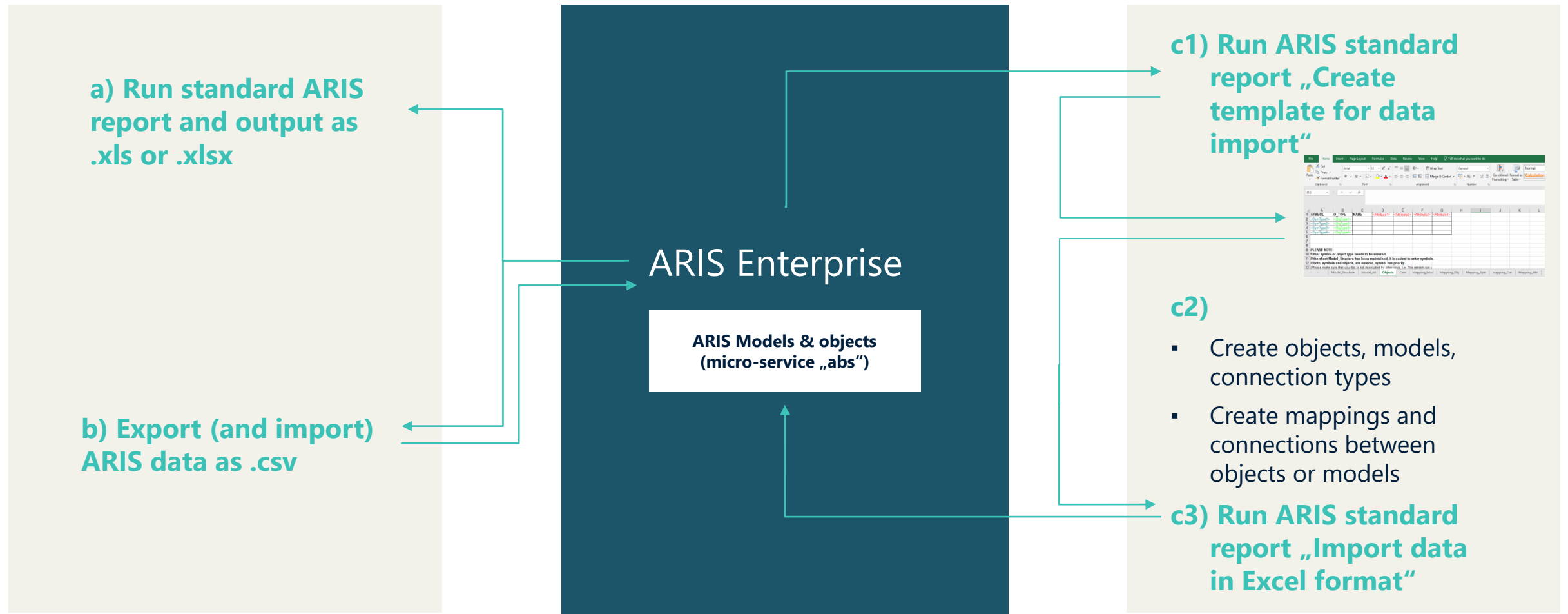
ARIS Models & objects
(micro-service „abs“)

The import will create
methodologically correct models
and objects in the ARIS database

ARIS 3rd party integration

Export and import from Excel and CSV

Use case
Single source of truth, spreading knowledge



A low-angle, upward-looking photograph of several thick, grey concrete pillars. The pillars are arranged in a way that creates a sense of depth and height, leading the eye towards a bright blue sky with some light clouds. The concrete has a textured, slightly weathered appearance.

Custom developed integrations

ARIS Atlassian Confluence

Custom development

Use case
Single source of truth, spreading knowledge

Use case

UI integration of ARIS in external web page &
Integration of tasks into ARIS

Rationale

Have development and project teams access Confluence because this was defined as standard system for managing tasks and no efforts for training in a new system was planned. As ARIS Portal is able to embed external systems via tiles on start page it has to be possible to also integrate tasks from external systems (such as Confluence) under the "MY TASKS" tile and have a hierarchy of tasks displaying in ARIS Portal.

One-directional data integration & UI integration, Confluence as master system

ARIS Jira integration

Custom development

Use case
Requirements mgt & issues mgt

Use case

1. ARIS Integration with Atlassian JIRA for requirements management & User Stories (not for issues)



Rationale

Defining system design requirements/user stories in ARIS & synchronizing them to JIRA for software development tracking

2. Bi-Directional Synchronization with JIRA (Atlassian) based on ARIS objects (defined as issues)
- Creation of issues uses ARIS as master
 - Once created, they can be updated within JIRA or ARIS but both systems are kept aligned



Allow business to create their requirements, and IT can pick them up and fine tune them before developing a solution

- Bi-directional data integration, either ARIS or JIRA as master system
- Notes: Alfabet already has a solid integration with Jira around Issues; Frank Engelbert (SAG) has developed an ARIS prototype export report into Jira

ARIS CMDB

Custom development

Use case
Single source of truth

Use case

1. ARIS is fed with CMDB data (Hardware oriented in classic IT scenario with servers, laptops including all software) to be the single source of truth
2. Be able to import the configuration of usage of the AWS, Azure services and objects (virtual machines, services, storage services, virtual networks, ports, etc. ... into ARIS) with the corresponding ARIS symbols

Rationale

Keep alignment between applications in ARIS and in the CMDB and to serve as a library for the company to start working on services, items etc.

- Data integration between ARIS and CMDB, CMDB as master system
- CMDBs that this has been done for: ServiceNow CMDB, Microsoft SCCM, Computer Associates

ARIS HRMS

Custom development

Use case
Single source of truth

Use case

Targeting to populate ARIS UMC with additional information per employee, for instance with the department he/she is working in, and the position of this department in the overall Org Structure of the company. This structure is replicated via ARIS reporting in UMC and employees are auto inserted at the corresponding levels

Rationale

We use this for accelerating access management for ARIS UMC groups

- One-directional data integration between HRMS system and combined with LDAP imported data we are for role-based access to the published content of the portal
- HRMS this has been done for: Workday, SAP ERP HCM

